

PHANTEKS



REVOLT X



POWER 2 SYSTEMS

1200W

Phanteks is bringing unique possibilities to the power supply market with the new Phanteks Revolt Series power supplies. After years of experience in engineering power regulatory devices (Phanteks Power Splitter), we've combined our expertise with Seasonic to develop the Revolt X, the first dual system power supply. It's equipped with dual motherboard and CPU output connectors that can support a secondary system and power it individually.

DUAL SYSTEM SUPPORT

Custom PCB-Design from Phanteks enables the Revolt X to power 2 systems. Each system can be operated individually.

EFFICIENT POWER REGULATION

Continuous load sharing between both systems improves the total efficiency compared with when using 2 individual power supplies.

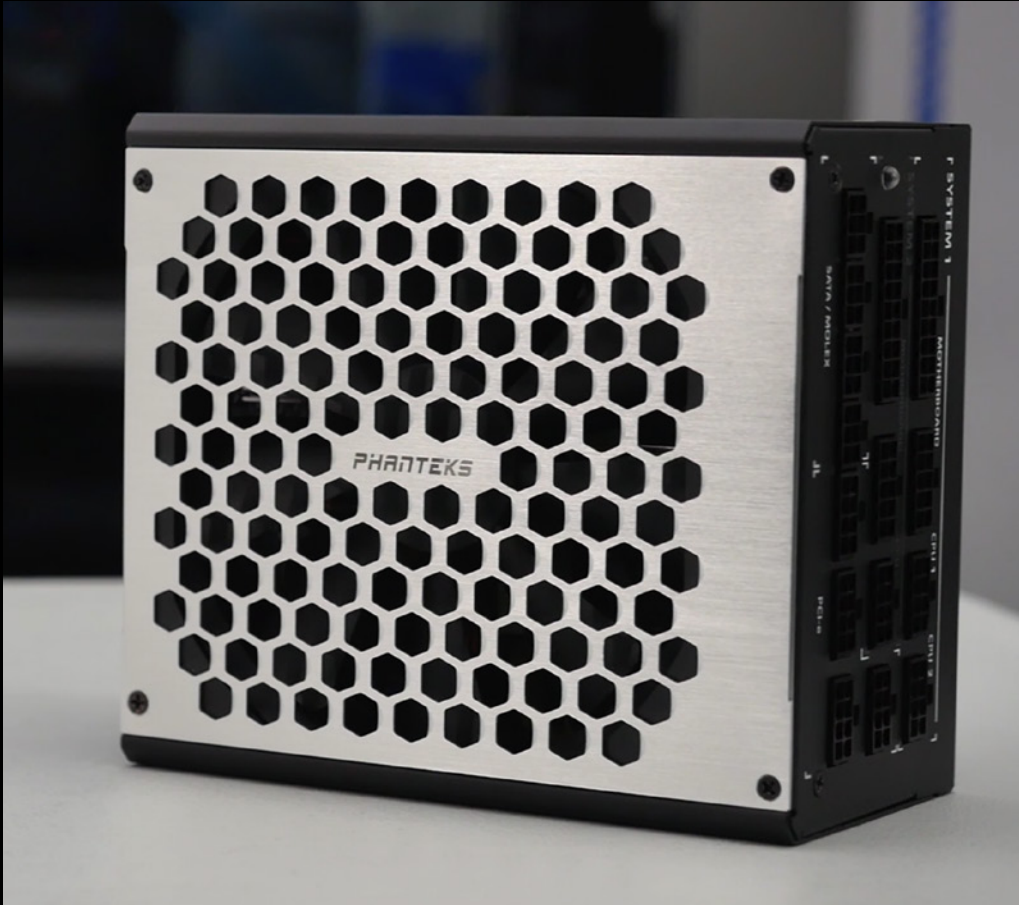
CLEAN CABLE MANAGEMENT

Minimize the cables. All cables are included for dual system.

DUAL SYSTEM SCENARIOS

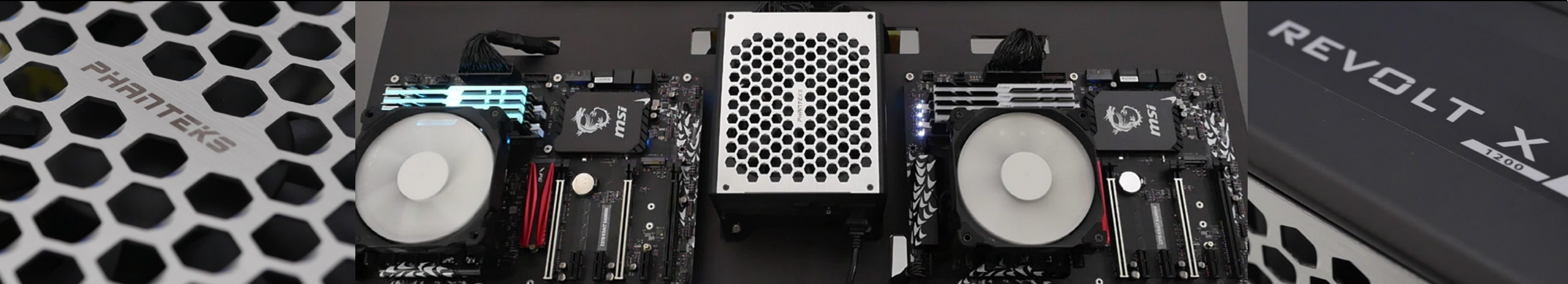
- gaming system / workstation
- workstation / server
- gaming system / streaming machine
- space saving solution for multi-users (1 enclosure 2 systems)

REVOLT X 1200W MSRP \$259,99 / €259,90



| Model | REVOLT X 1200W (PH-P1200PS) |
|----------------------|---|
| Intel Specifications | ATX12V / EPS12V |
| Dimensions | 170 mm (L) x 150 mm (W) x 86 mm (H) ± 1 mm |
| Efficiency | 80 PLUS® Platinum / Energy Star |
| Protection Features | OPP / OVP / UVP / SCP / OCP / OTP |
| Hazardous Materials | WEEE / RoHS |
| AC Input Range | 100V-240V~ 15A-7.5A 50Hz-60Hz |
| Output Connectors | 2x Motherboard-18/10pin 3x CPU-8pin 4x PCI-e 8pin 4x SATA/Molex 6pin |
| Included Cables | 2x 24-pin Motherboard. 2x 4+4-pin CPU. 1x 8/4+4-pin CPU. 4x 6+2/6+2-pin PCI-e. 4x SATA, 4 connectors. 1x Molex, 3 connectors. 1x Power Cable. |

Patented **PHANTEKS** technology
Powered by **Seasonic**



PHANTEKS



REVOLT PRO



EXPAND YOUR POWER

850W 1000W

Phanteks is bringing unique possibilities to the power supply market with the new Phanteks Revolt Series power supplies. After years of experience in engineering power regulatory devices (Phanteks Power Combo), we've combined our expertise with Seasonic to develop the Revolt Pro, the first expandable power supply. With the Revolt Pro power supplies you will have the option to simply connect any power supply to the Revolt PRO and combine the total power output or use it as a back-up power source thanks to the integrated redundancy feature.

EXPAND YOUR POWER OUTPUT

Custom PCB-Design from Phanteks enables the Revolt Pro to be connected to a secondary power supply to combine the total power output.

UPGRADABILITY

Keep the option for (future) expansion or make use of your old power supply.

REACH HIGHER EFFICIENCY LEVELS

In dual PSU configuration, the Revolt Pro will continuously balance the power load of both power supplies and maintain the best efficiency levels.

PROVIDE REDUNDANCY TO YOUR SYSTEM

If one of the two power supplies fails in dual PSU configuration, your system will keep running normally without data lost.

DUAL PSU SCENARIOS

- high-end gaming system
- powerful professional workstation
- data server (redundancy)
- mining machine

REVOLT PRO 850W MSRP \$129.99 / €129,90

REVOLT PRO 1000W MSRP \$159.99 / €159,90



| Model | REVOLT PRO 850W (PH P850GC) | REVOLT PRO 1000W (PH P1000GC) |
|----------------------|--|--|
| Intel Specifications | ATX12V / EPS12V | ATX12V / EPS12V |
| Dimensions | 170 mm (L) x 150 mm (W) x 86 mm (H) ± 1 mm | 170 mm (L) x 150 mm (W) x 86 mm (H) ± 1 mm |
| Efficiency | 80 PLUS® Gold / Energy Star / ErP lot 6 2013 | 80 PLUS® Gold / Energy Star / ErP lot 6 201 |
| Protection Features | OPP / OVP / UVP / SCP / OCP / OTP | OPP / OVP / UVP / SCP / OCP / OTP |
| Hazardous Materials | WEEE / RoHS | WEEE / RoHS |
| AC Input Range | 100V-240V~ 12A-6A 50Hz-60Hz | 100V-240V~ 13A-6.5A 50Hz-60Hz |
| Output Connectors | 1x Motherboard-18/10pin 6x CPU-8pin/PCI-e 8pin 5x SATA/Molex 6pin | 1x Motherboard-18/10pin 6x CPU-8pin/PCI-e 8pin 5x SATA/Molex 6pin |
| Input Connectors | 1x Motherboard-24pin, 1x CPU-8pin | 1x Motherboard-24pin, 1x CPU-8pin |
| Included Cables | 1x 24-pin Motherboard. 2x 4+4-pin CPU. 4x 6+2/6+2-pin PCI-e. 1x SATA, 2 connectors. 3x SATA, 4 connectors. 1x Molex, 3 connectors. 1x Power Cable. | 1x 24-pin Motherboard. 2x 4+4-pin CPU. 4x 6+2/6+2-pin PCI-e. 1x SATA, 2 connectors. 3x SATA, 4 connectors. 1x Molex, 3 connectors. 1x Power Cable. |

Patented **PHANTEKS** technology

Powered by **Seasonic**





ECLIPSE P300

NEW COLOR EDITIONS

CES®

AVAILABLE: Q1 2018

ECLIPSE P300 MSRP \$59.99 / €59,90

RED

WHITE

BLACK

COMPACT - SPACE EFFICIENT ATX CHASSIS

QUALITY - FULL METAL & GLASS EXTERIOR

INTUITIVE - USER FRIENDLY INSTALLATION



ECLIPSE P300
SERIES

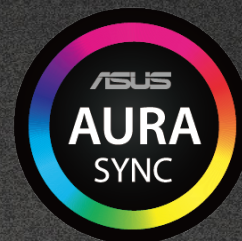
PHANTEKS

ECLIPSE P350X

AVAILABLE: Q1 2018



ECLIPSE P350X MSRP \$69.99 / €69,90



ADDRESSABLE



RAINBOW

- COMPACT EATX MDTOWER
- INTUITIVE - CONVENIENT INSTALLATION
- HIGH AIRFLOW
- INTEGRATED DIGITAL RGB LIGHTING
- SPACIOUS CABLE MANAGEMENT
- FULL LENGTH GPU & PSU SUPPORT

CASE SPECIFICATIONS

| | |
|-------------|--|
| Form Factor | Midtower |
| Materials | Steel chassis Tempered Glass ABS plastic |
| MB Support | *E-ATX, ATX, Micro-ATX, Mini ITX (* E-ATX up to 275 mm width) |
| Front I/O | 2x USB 3.0, Mic, Headphone, RGB LED SW |
| Side Window | Yes, Tempered glass |

PCI SLOTS & DRIVE BAYS

| | | |
|-----------------|-------------------|---------------|
| PCI slots | 7 | |
| Internal 3.5" | 2x (2 included) | |
| Internal 2.5" | 2x (1 included) | |
| FAN | 120 mm | 140 mm |
| Front | 2x | 2x |
| Top | 1x | 2x |
| Rear | 1x (1 included) | |
| RADIATOR | 120 mm | 140 mm |
| Front | Up to 240 | Up to 280 |
| Rear | 120 | - |

ECLIPSE P350X
SERIES

PHANTEKS

AVAILABLE: Q1 2018



DIGITAL
RGB
by
PHANTEKS



RAINBOW



ADDRESSABLE

MSRP \$24.99 / €24,90



DIGITAL-RGB CONTROLLER

Go beyond RGB with Digital-RGB from Phanteks. With Digital-RGB each LED is controlled individually, featuring more patterns and color modes.

- Easy control with a 3 button remote.
- Works without installation of additional software.
- Option to sync with a Digital RGB compatible motherboard and control through motherboard software.
- Connect to other D-RGB products from Phanteks (Halos Digital / D-RGB LED Strip).
- Easy installation with integrated magnets for quick placement.
- Place the remote anywhere with the included velcro tape.

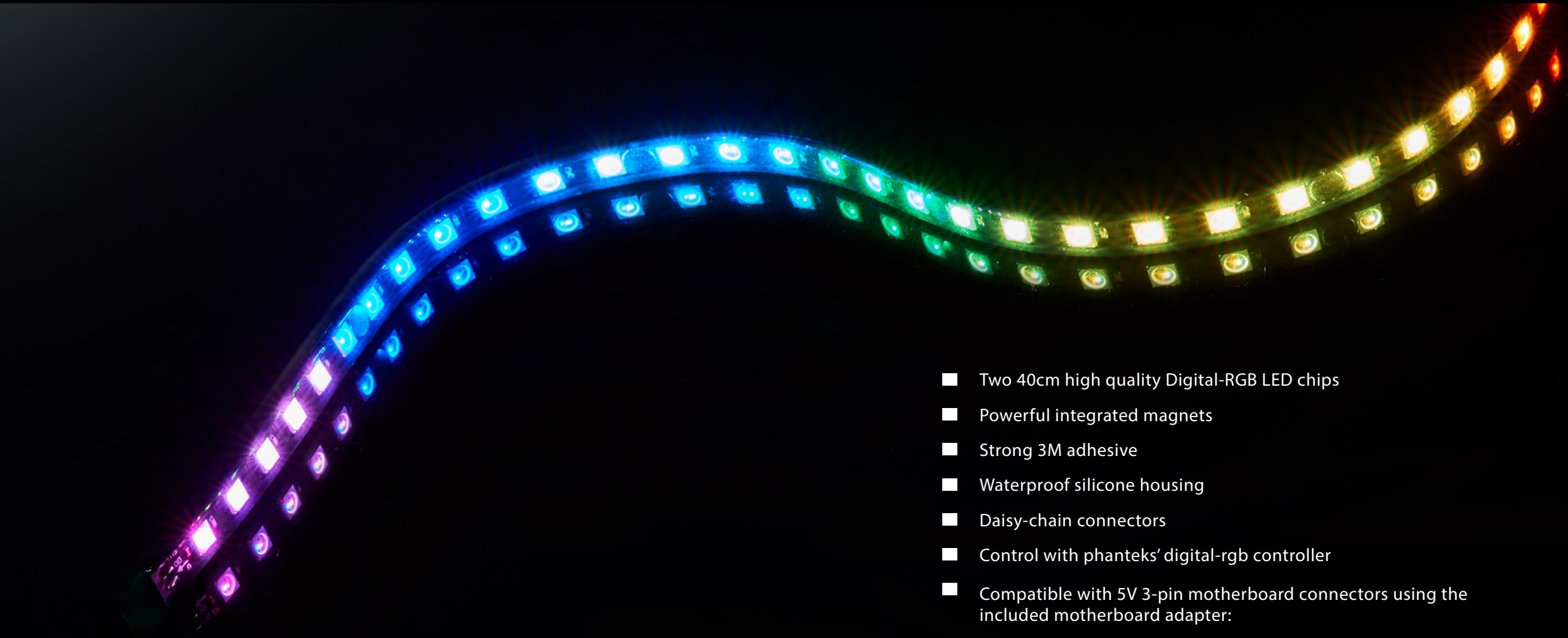
MSRP \$19.99 / €19,90



RGB / DRGB EXPANSION HUB

Increase the number of supported (Digital) RGB lighting products on your RGB or Digital RGB motherboard using the Phanteks Expansion HUB. Power directly from the power supply and sync with compatible RGB and D-RGB motherboards.

- Expand up to 5 meters of RGB LED-strips.
- Expand up to 8 D-RGB products from Phanteks (Halos Digital / D-RGB LED Strip).
- Sync with any (D-) RGB-equipped motherboard.
- Easy installation with integrated magnets.



DIGITAL-RGB LED STRIP

- Two 40cm high quality Digital-RGB LED chips
- Powerful integrated magnets
- Strong 3M adhesive
- Waterproof silicone housing
- Daisy-chain connectors
- Control with phanteks' digital-rgb controller
- Compatible with 5V 3-pin motherboard connectors using the included motherboard adapter:



HALOS LUX
DIGITAL RGB FRAME DIGITAL

ALSO AVAILABLE AS
HALOS
DIGITAL RGB FRAME

- Made from one single piece of aluminum.
- illuminate any fan with the HALOS DIGITAL-RGB Frame from Phanteks.
- 30 LED's provide a high quality and even lighting effect.
- Fan screws included to mount HALOS directly on to a fan.
- Radiator screws included to mount on to a fan and radiator using UNC 6-32 threads.
- Daisy chain all of Phanteks' DIGITAL-RGB products together.
- Sync with any DIGITAL-RGB equipped Phanteks controller or motherboard.

PHANTEKS

AVAILABLE: Q1 2018

MSRP \$69.99 / €69,90

GLACIER SERIES

C350 CPU WATERBLOCK ACETAL EDITION FOR INTEL AND AMD

GLACIER C350iP

INTEL 115x/2011-3/2066

GLACIER C350AP

AMD AM4

- High quality materials (Acetal top / nickel plated copper base and cooling fins)
- Based on similar high performance design as the Glacier C350i and C350a CPU waterblocks.
- RGB free
- Easy installation.



GLACIER SERIES

PHANTEKS

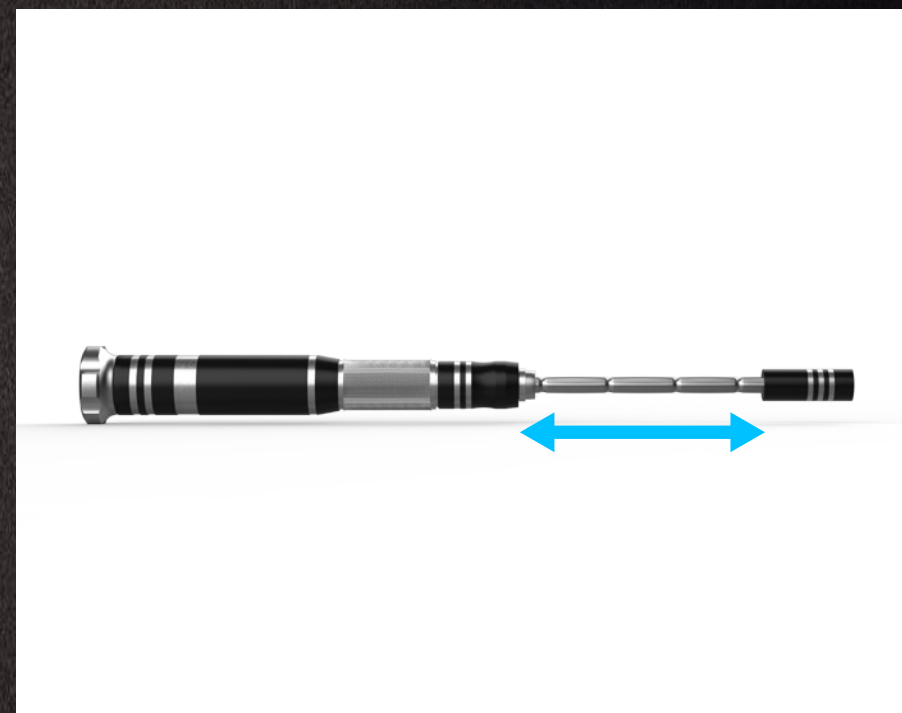


PHANTEKS TOOLKIT

THE ONLY TOOLSET YOU'LL EVER NEED FOR PC-BUILDING

MSRP \$19.99 / €19,90

- Custom selection of tools and bits for (watercooled) PC building
- Full metal (aluminum / steel)
- Telescopic extendable shaft for small spaces
- Comes with a flexible extender for hard to reach corners
- Magnetic tip makes it easy for picking up screws
- Durable soft shell case included to keep everything together (fits the Phanteks toolbox)



CHASSIS / FAN / HARD DRIVES

OTHER (SMALL) ELECTRONICS

WATER BLOCKS

WATER PUMPS



PHANTEKS

MOTHERBOARD STAND-OFFS